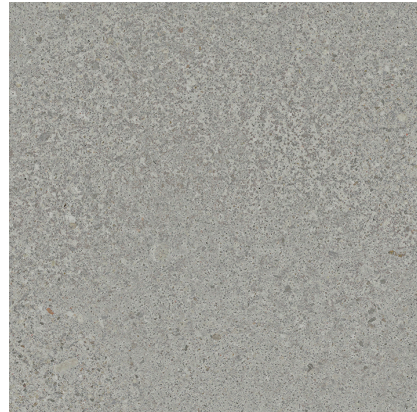


Model: LOFT GREY 120X120(A)

Codes: 100320135

Water absorption: Bla - Porcelánico ($E \leq 0.1\%$)



DIMENSIONAL FEATURES

 UNE-EN ISO 10545-2

Thickness	11.5 MM	+/-5%*
Width	1200 MM	
Length	1200 MM	
Length and width deviation	Below 0.15%	+/-0.3%*
Side straightness deviation	Below 0.15%	+/-0.3%*
Squareness deviation	Below 0.15%	+/-0.3%*
Surface flatness deviation	Below 0.15%	+/-0.4%*

*ISO-13006:2018 UNE-EN 14411:2016

MECHANICAL FEATURES

 UNE-EN ISO 10545-4-6-7-11

Breaking strength	3065.3 N	>1300N*
Modulus of rupture	37.32 N/MM2	>=35N/mm2*
Crazing resistance	Resists 3 cycles	

*ISO-13006:2018 UNE-EN 14411:2016

HYGIENIC FEATURES

 UNE-EN ISO 10545-13-14:1995

Chemical resistance	Class "A" for swimming pools and cleaning products (resists attack). Minimum Class "B" for acids and bases	B Min.*
Stain resistance	Class 5. Easy cleaning with water	3 Min.*

*ISO-13006:2018 UNE-EN 14411:2016

SCOPE OF USE

Technical code-1	Use on heavy traffic floors	
------------------	-----------------------------	--

ANTI-SLIP VALUE

 EN 16165: 2022 / ASTM C1028

Slip resistance (pendulum-wet)	CL1	
Slip resistance (ramp)	R-10	16919 (1C2)*
Slip resistance (bare feet)	A	16918 (1C2)*

*ISO-13006:2018 UNE-EN 14411:2016

System Certification



PACKING

Sales units per box	1.440092 M2/BOX
Sales units per pallet	54.723502 M2/PAL
Sales units per unit	1.440092 M2/PIECE

System Certification



Do not use cleaning agents containing hydrofluoric acid.
It is recommended to fix tiles with a minimum joint of 1,5 mm. Do not fix without joint.
For big sizes, it is recommended to fix with mortars containing polymeric additives and to use the double glueing technique.
Mosaic tiles must be grouted.

This document is only commercial and cannot be used as expert opinion, documentary evidence or in any legal or administrative procedure unless authorized by PORCELANOSA S.A.